

An aerial photograph of a mountainous region. The left side shows terraced agricultural fields in shades of green and brown, while the right side is dominated by a dense, dark green forest. The terrain is rugged and hilly.

Rule of Law and the Environment

Henry Cornwell | Counsel | Asian Development Bank
26 February 2024

The King and the Forest

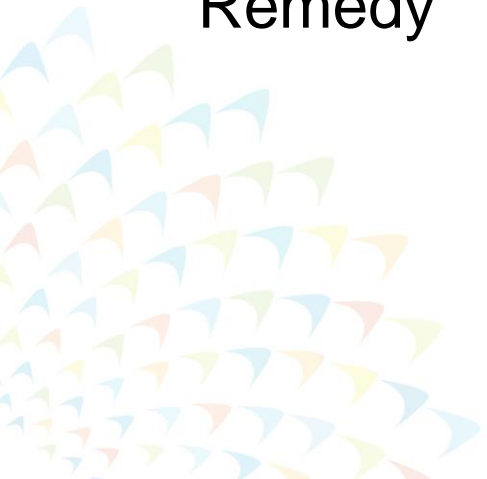


Environment and Rule of Law



Defining the rule of law

1. Equality under the law
2. Transparency of law
3. Independent Judiciary
4. Accessible Legal Remedy



Visualizing the relationship

Rule of Law and Environmental Performance (World)



Visualizing the relationship

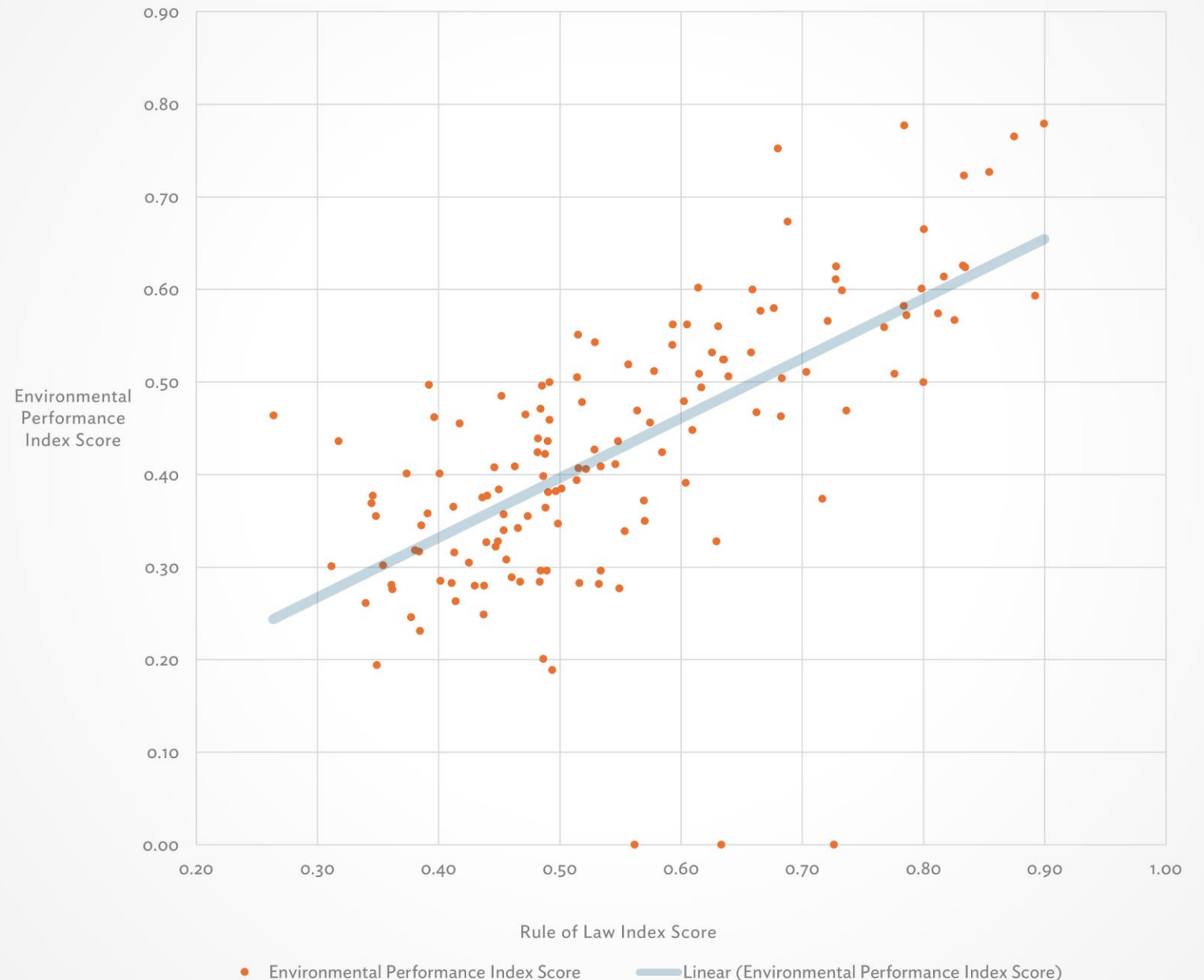
WJP Rule of Law Index 2023:

1. Constraints on Government Powers
2. Absence of Corruption
3. Open Government
4. Fundamental Rights
5. Order and Security
6. Regulatory Enforcement
7. Civil Justice
8. Criminal Justice

Yale Environmental Performance Index:

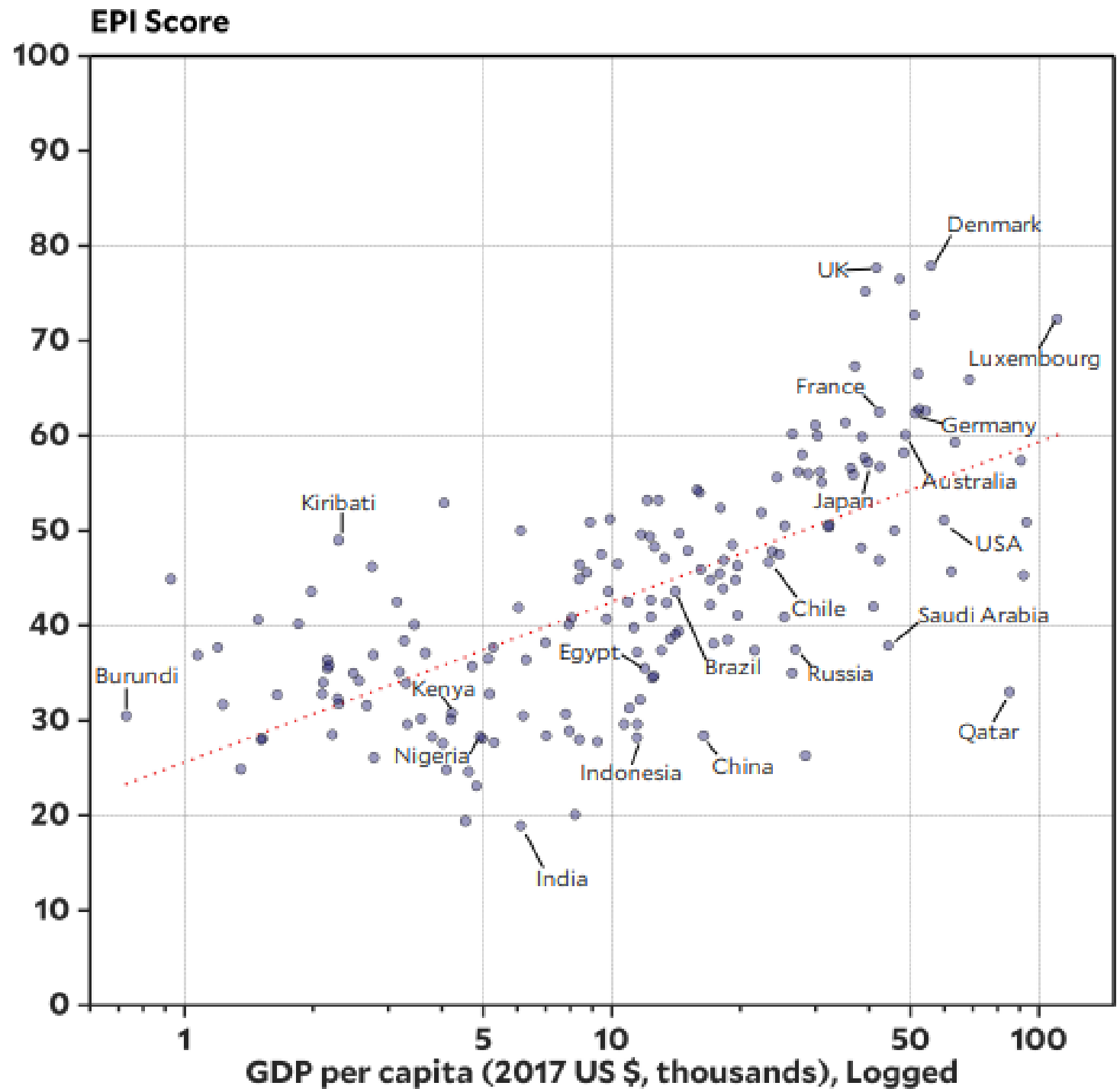
1. Climate
2. Environmental Health
3. Ecosystem Vitality

Rule of Law and Environmental Performance (World)



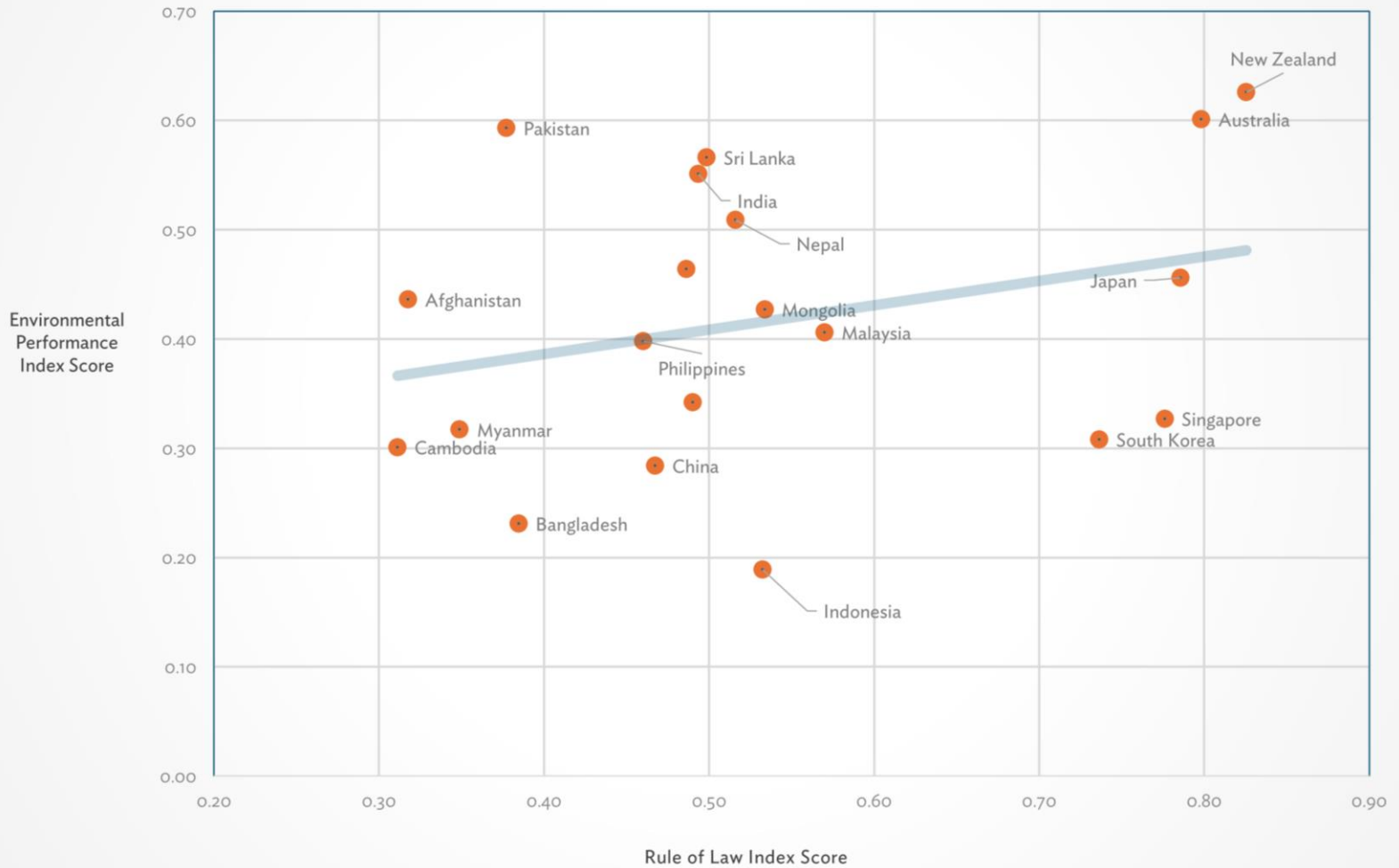
Visualizing the relationship

The correlation between a country's wealth and environmental performance



Visualizing the relationship

Rule of Law and Environmental Performance (Asia)



Visualizing the Relationship: Hispaniola

An aerial photograph of a rugged, mountainous landscape in Hispaniola. The terrain is characterized by steep, rocky slopes and deep, narrow valleys. The vegetation is a mix of green and brownish-yellow, suggesting a transition from forest to scrubland or agricultural land. The overall appearance is one of a complex, high-altitude environment.

Image source: [Mike C. Rowley](#)

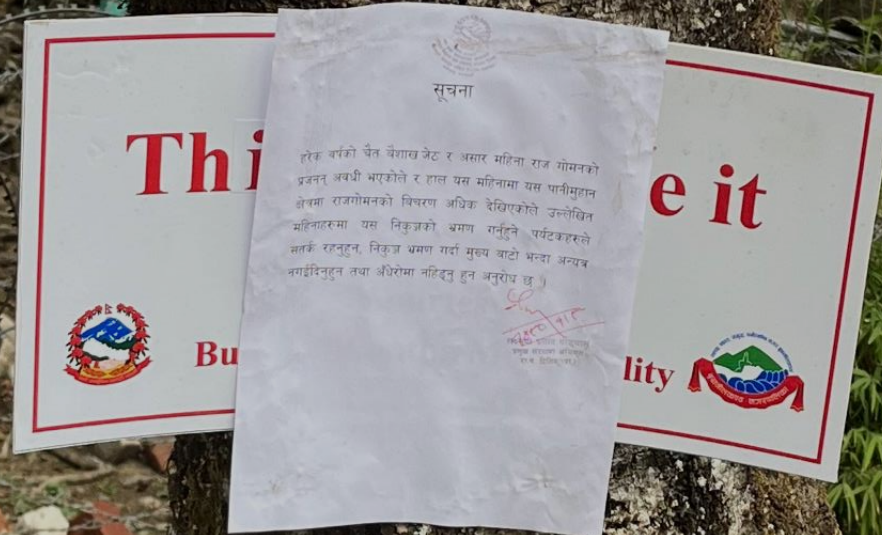
Autocracy is Fragile



Water sector reform in Sri Lanka



Shivapuri and the people



Jiangsu Yancheng Wetlands Protection Project

- **Loan** - Sovereign Loan with some nominal blended grant financing and government co-finance
- **Payment for Ecosystem Services** - Model used to reduce pollution and support livelihoods.
- **Community Benefit** - 2,900 people benefited from project through direct employment, 40 hotels opened 1 million visitors per year
- **Nature Conservation** - 4,554 ha wetland restored and rehabilitated. 365% increase in bird population in Rare Bird Nature Reserve
- **UNESCO WHS Listing** - Project contributed to 2019 listed of Yancheng as Natural World Heritage Site.



An Integrated Approach to Preserving the Wetlands in the People's Republic of China

TOTAL
PROJECT
COST:



- ADB: \$27.2 million
- GEF: \$1.4 million
- Government counterpart funding: \$30.5 million

The Future of Shivapuri



Integrating the Rule of Law into Environmental Interventions

Local

Systemic

Systematic